

The individual DA converter deployment to voltage output

| | |
|-----|-----|
| CH1 | 10V |
| CH2 | 15V |
| CH3 | 20V |

- Every channel can set a sample applied voltage.
- You can carry out a voltage dependence examination easily.
- This system can set a sample applied voltage to 1V – 300V seamlessly.

The current limit circuit is equipped with by every channel

- The channel does not affect the measurement of other channels even if a sample short-circuits.
- Current limit circuit functions at 700uA and can prevent a damage of dendrite without affecting a value of the voltage.

16msec high speed AD converter is equipped with for voltage/current measurements by every channel

- There is not time lag and measures resistance value for sampling it precisely at all the channels same time.
- Processing is applied to each current range the most suitable average automatically.
At high resistance value : Ham noise is removed by averaging of 16msec × 16 times
At low resistance value : 6msec × 1 time averaging detects a leak touch fast

High side measurement. Clamping circuit. Adoption of the double shield cable

- Because it is a high side measurement circuit, common line is one of them per the group.
- Because the measurement cable is unitary, the conservatism is good.
- The double shield cable handled active guard is not affected by the noise.
- It prevents an overshoot after the leak touch.
- This can examine the sample of high capacitance and is most suitable for the evaluation of the part implementation board.

High-performance

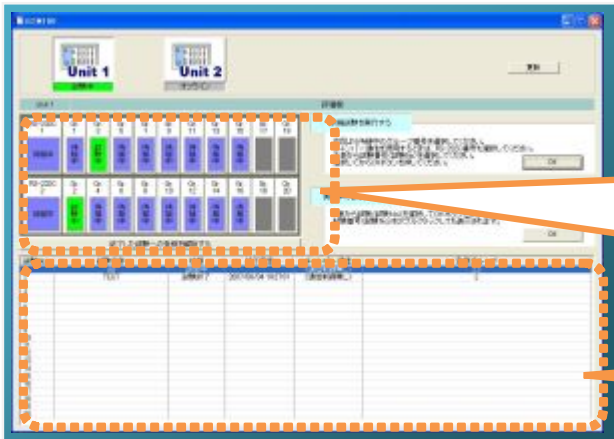
- ECM-100 carries out an examination alone after an examination condition was set with a PC.
- ECM-100 carries out communication control with chambers.
- An interlock function of the door opening of chamber is supplied with it.

High reliability

- An examination condition / the test data is memorized to a reliable CF card in comparison with a PC or the HDD.
- ECM-100 is backed up with UPS and can continue an examination even if a blackout of around several seconds occurs.

We prepare specifications of ECM-100 and the detailed document about the function. Please refer willingly

Main screen The refined operability that does not demand complicated operation intelligibly



Group status

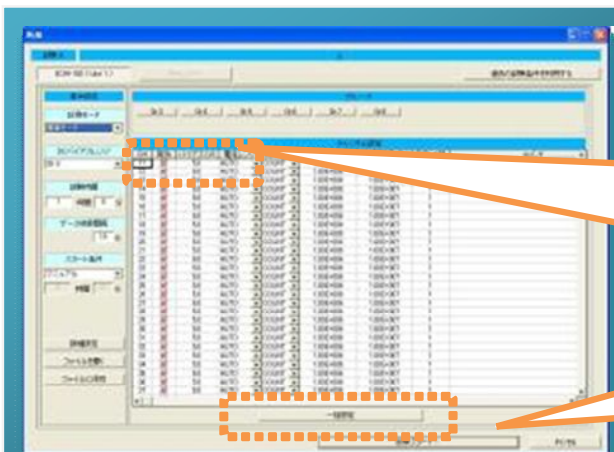
- grasp the state of each group instantly
- group to use for examination directly and choose it

| | | | | | | | | | | |
|--------------|-------|-------|-------|-------|--------|--------|--------|--------|--------|--------|
| RG-220C 2 | Gr. 1 | Gr. 3 | Gr. 5 | Gr. 7 | Gr. 9 | Gr. 11 | Gr. 13 | Gr. 15 | Gr. 17 | Gr. 19 |
| | 待機中 | 待機中 | 試験終了 | 待機中 | 待機中 | 待機中 | 待機中 | 待機中 | 待機中 | 待機中 |
| RG-220C 3 | Gr. 2 | Gr. 4 | Gr. 6 | Gr. 8 | Gr. 10 | Gr. 12 | Gr. 14 | Gr. 16 | Gr. 18 | Gr. 20 |
| | 待機中 | 待機中 | 待機中 | 待機中 | 待機中 | 待機中 | 待機中 | 待機中 | 待機中 | 待機中 |

List of examinations

- An examination state carrying out displays it with a list
- Easily access data screen just to click it

Setting screen (ECM-100) Detailed setting according to the channel, the collective setting are comfortable !



Channel individual setting

- Input direct to a setting cell

| CH | 有効 | バイアス(V) | 電流レンジ | E |
|----|-------------------------------------|---------|-------|---|
| 11 | <input checked="" type="checkbox"/> | 5.0 | AUTO | C |
| 12 | <input checked="" type="checkbox"/> | 10.0 | AUTO | C |
| 13 | <input checked="" type="checkbox"/> | 20.0 | AUTO | C |

(possible setting in bias each channel individually)

Collective setting

- call the exclusive preferences panel, and it is set by all appointment CH.



Setting screen(Chamber) Compare with illustration indication and can set it without being wrong

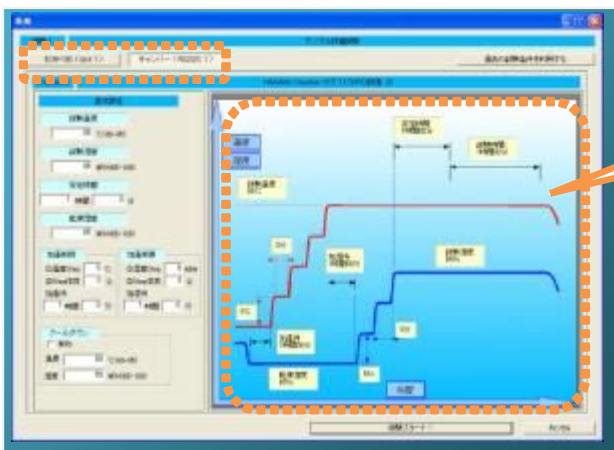


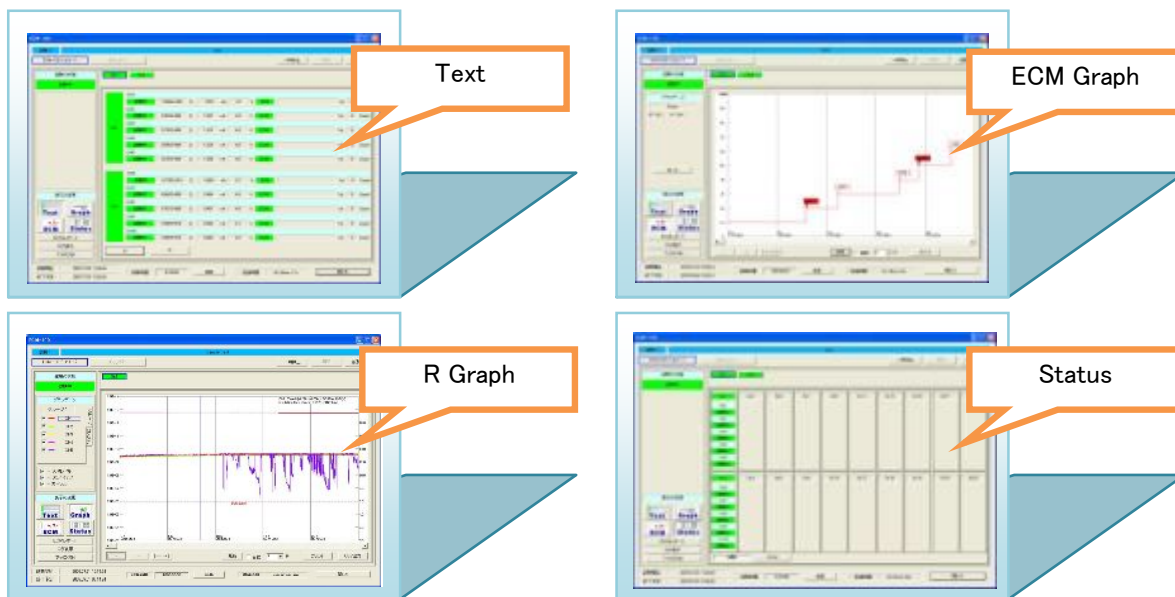
Illustration indication

- Setting numerical value is displayed immediately in the right position and prevents a setting error.

The function to control a chamber is optional

We prepare specifications of ECM-100 and the detailed document about the function. Please refer willingly

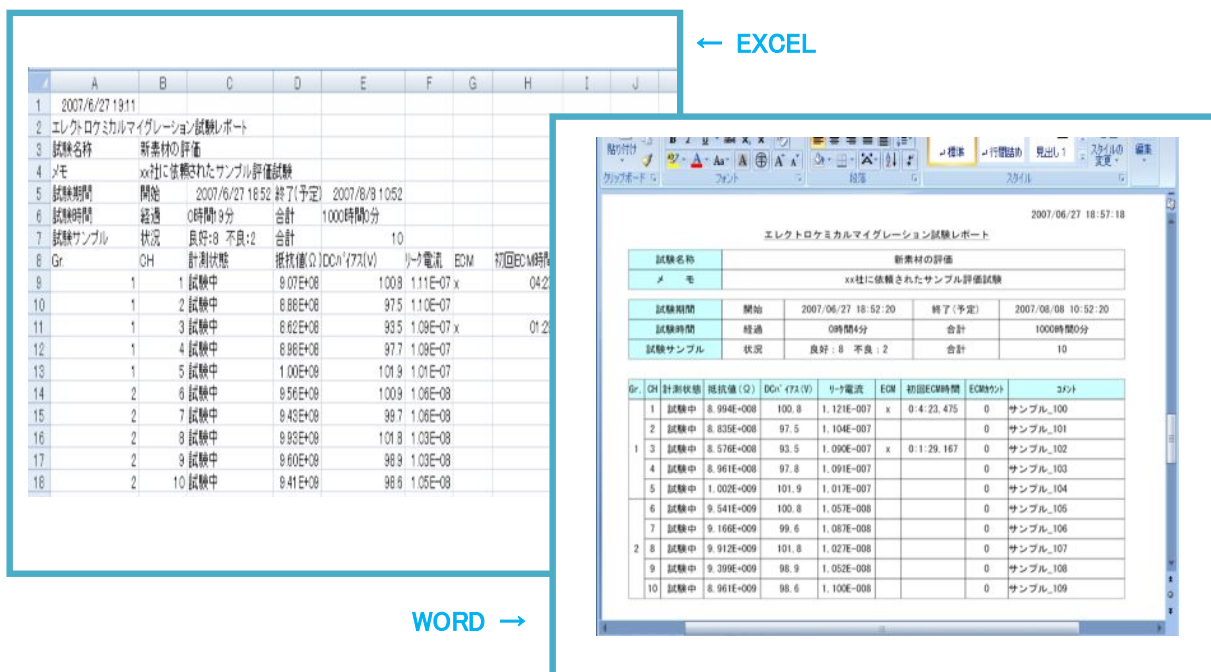
Data screen Divide a function into four screens and pursue easiness in seeing and usability



A report function to help a progress report and record easily report a current sample state quickly

The main indication contents of the report function

By the timing of an option examining, you can output the current resistance value / value / trouble outbreak situation in an image and text file in a report form with an examination title, a memo, channel comment. A word-processing software, a spreadsheet can perform pasting / editing it.



A function to meet a demand for the measurement machinery evaluating the self-checks that weibull plot indication helping analysis and the soundness of the device can confirm reliability is equipped with in this system in the interface that it is easy to use that concentrated a device as standard equipment.

We have the software of the English version.

We prepare specifications of ECM-100 and the detailed document about the function. Please refer willingly